

Aldreds
Estate Agents



30 Longden Avenue

Oulton Broad, Lowestoft, NR32 3BX

£420,000



30 Longden Avenue

Oulton Broad, Lowestoft, NR32 3BX

We are pleased to offer this IMMACULATE 4 bedroom, detached bungalow residing on a double plot in Oulton Broad. BENEFITTING from uPVC double glazing, gas central heating and 21 solar panels providing an abundant amount of electricity. The property is fronted by an electric gate opening to the driveway for 4 vehicles plus access to the garage with an electric door. The front features external power sockets, borders of mature shrubs and an artificial lawn and a gated path leads either side of the property to the rear garden. The rear features more mature shrub borders, fruit bearing trees, slate beds, a private patio and a summerhouse with power and a timber shed attached to the rear. Once through the front door you are greeted by an enormous Entrance Hall with stunning flooring. Internally the living areas feature a mix of beautiful Amtico and Karndine flooring, stylish Latch and Brace wooden doors and the windows fitted with a mix of Venetian and Plantation shutters. All Bedrooms feature carpets, radiators and power points. The luxury Bathroom is fully tiled and comprises a suite of a beautiful roll edge freestanding bath with rinser, a pedestal wash basin, a low level W.C. and a separate shower cubicle. Loft access is gained via a fitted ladder and features a power supply. The Lounge is a good size with double glazing on two sides and is complemented by a traditional brick hearth with a fully working log burner. The Kitchen / Breakfast room features wall and base units, a one and a half bowl drainer sink, double eyeliner ovens, space for American style fridge freezer, a dishwasher and an Induction hob with a wide window overlooking the front garden and a rear door leading to the Utility room with plumbing and provision for a washing machine and tumble dryer, a single drainer sink and a part glazed door leading to the rear patio. Superbly presented and maintained, this property needs to be seen in person to fully appreciate the living space and outside space!





Entrance Hall
22'7" x 8'1" (max) (6.9 x 2.47 (max))

Kitchen/Breakfast Room
13'2" x 9'0" (4.02 x 2.75)

Utility Room
9'0" x 4'9" (2.75 x 1.45)

Lounge
13'0" x 18'9" (3.97 x 5.74)

Dining Room
13'0" x 9'8" (3.97 x 2.95)

Bedroom 1
14'6" x 10'5" (4.43 x 3.18)

Bedroom 2
15'1" x 10'5" (4.61 x 3.18)

Bedroom 3
7'2" x 7'0" (2.19 x 2.14)

Bedroom 4
13'0" x 9'10" (3.97 x 3.02)

Bathroom
8'11" x 7'0" (2.74 x 2.14)

Garage
17'2" x 10'0" (max as tapers down) (5.24 x 3.06 (max as tapers down))

Tenure
Freehold

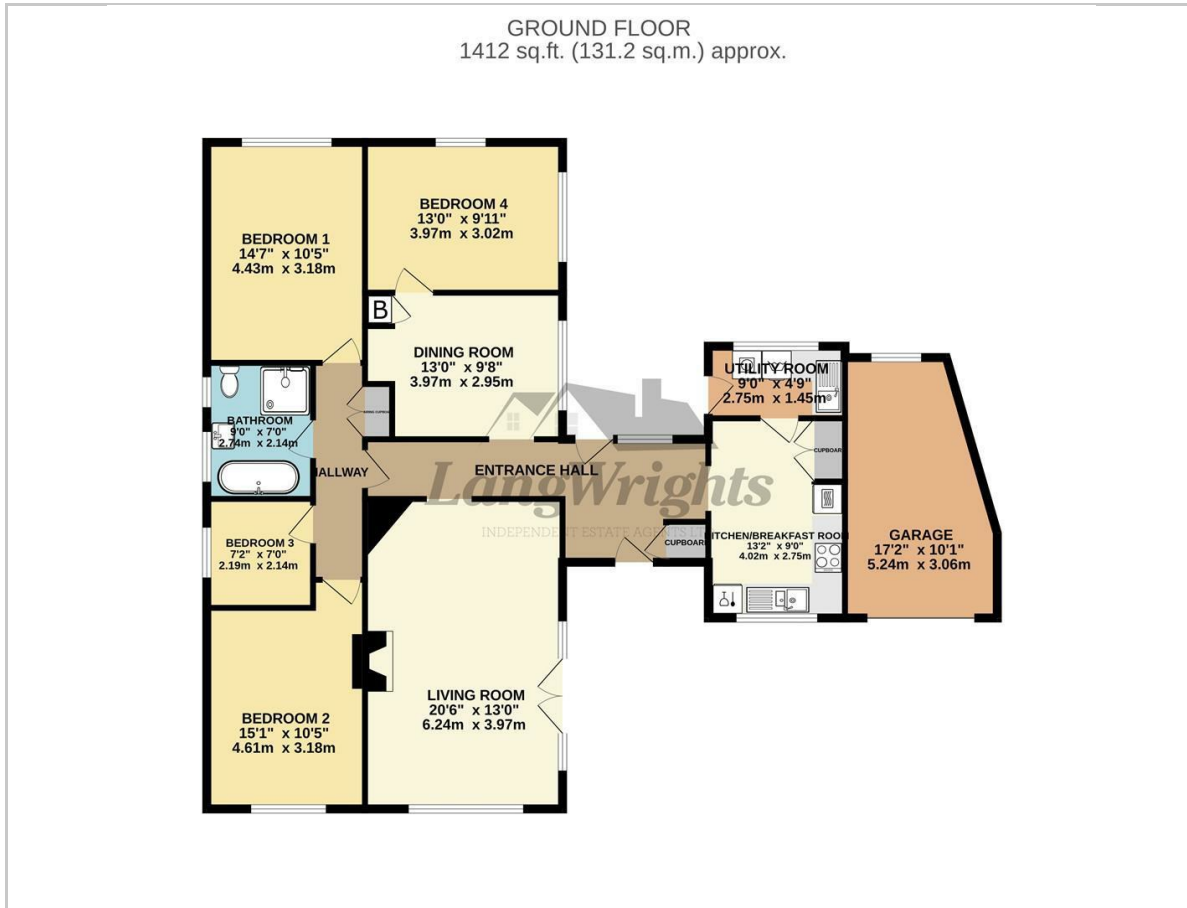
Services
Mains Gas, Water / Waste, Electricity + Solar Energy

Council Tax
East Suffolk Council - Band 'B'

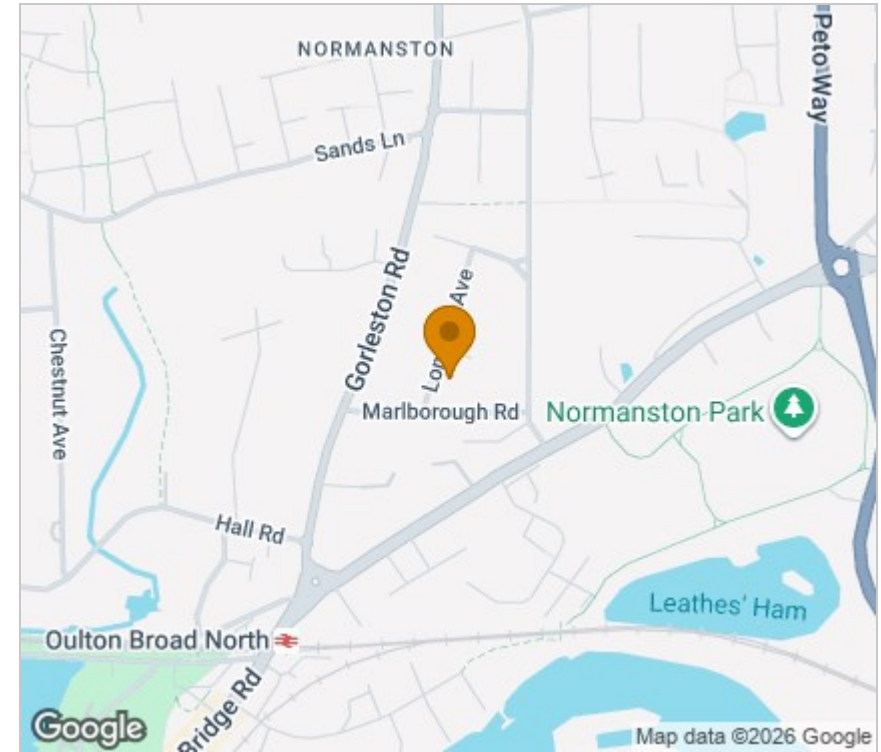
Ref: L2575/03/26



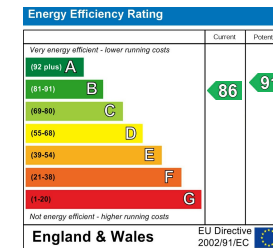
Floor Plan



Area Map



Energy Efficiency Graph



Viewing

Please contact our Aldreds Lowestoft Office on 01502 565432 if you wish to arrange a viewing appointment for this property or require further information.

Disclaimer

These particulars are issued on an understanding that all negotiations shall be conducted through Messrs. Aldreds. Please note: Messrs. Aldreds for themselves and for the vendors or lessors of this property whose agents they are given notice that: 1. Particulars are set out as a general outline only for guidance of intending purchasers or lessees, and do not constitute nor constitute part of, an offer or contract. 2. All descriptions, dimensions, references to condition and necessary permissions for use and occupation, and other details are given without responsibility and any intending purchasers or tenants should not rely on them as statements or representations of fact but must satisfy themselves by inspection or otherwise as to the correctness of each of them. 3. No person in the employment of Messrs. Aldreds has any authority to make or give any representation or warranty whatever in relation to this property. 4. If you are proposing to visit the property and are travelling some distance please check with Aldreds on the issue of availability prior to travelling. 5. Aldreds Property Consultants and associated services may offer additional services to the prospective purchaser for which they will be entitled to receive a commission.

Aldreds are pleased to be working with Mortgage Advice Bureau. They're an award-winning mortgage broker with over 1,400 advisers across the UK, and have access to over 12,000 mortgage products from over 90 lenders. Aldreds Estate Agents Ltd receive a commission of £200 on each completed case. Your home may be repossessed if you do not keep up repayments on your mortgage. There may be a fee for mortgage advice. The actual amount you pay will depend upon your circumstances. The fee is up to 1%, but a typical fee is 0.3% of the amount borrowed. Mortgage Advice Bureau is a trading name of Mortgage Seeker Limited which is an appointed representative of Mortgage Advice Bureau Limited and Mortgage Advice Bureau (Derby) Limited which are authorised and regulated by the Financial Conduct Authority. Mortgage Seeker Limited Registered Office: Lovewell Blake, Sixty Six North Quay, Great Yarmouth, Norfolk, NR30 1HE. Registered in England Number: 03721415. 6. Potential purchasers should check with their providers that the broadband and mobile phone coverage they would require is available.

143 London Road North, Lowestoft, Suffolk, NR32 1NE

Tel: 01502 565432 Email: lowestoft@aldreds.co.uk <https://www.aldreds.co.uk/>

Registered in England Reg. No. 08945751 Registered Office: 17 Hall Quay, Great Yarmouth, Norfolk NR30 1HJ

Directors: Mark Duffield B.S.c. FRICS. Dan Crawley MNAEA Paul Lambert MNAEA